

# User Manual

## LDHC Couplings



Asoe Hose Manufacturing Inc.

[www.asoehose.com](http://www.asoehose.com)

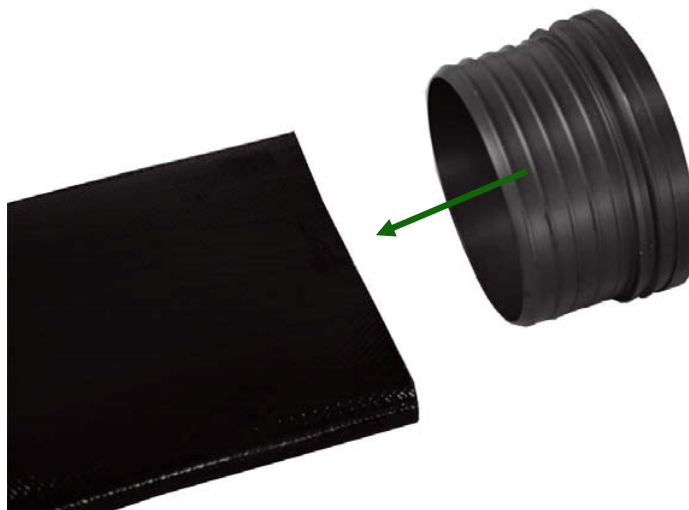
**Hose & Solutions**

## 1. Check list

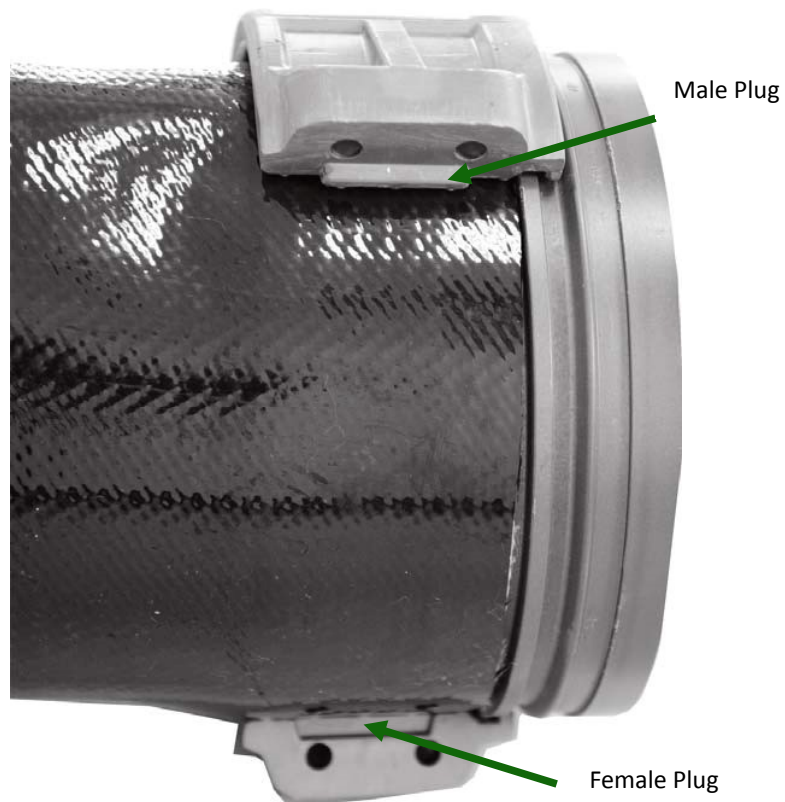
One set of LDHC couplings include:

- ✓ 12 PCs of bolts and nuts (12 PCs for 6", 8" and 10" LDHC coupling. 16 PCs of bolts and nuts for 12" LDHC couplings)
- ✓ Two pieces of nipples
- ✓ Six pieces of LDHC clamps

2. Take out one piece of LDHC Nipple and insert the shank of nipple into Layflat hoses.



- Put LDHC clamps on layflat hoses with locking tooth positioning into locking groove. If all three pieces of LDHC clamps are positioned correctly, the male plug of one LDHC clamp will accord with female plug of the another LDHC clamp.



4. Insert all bolts into holes and fasten bolts with nuts manually.

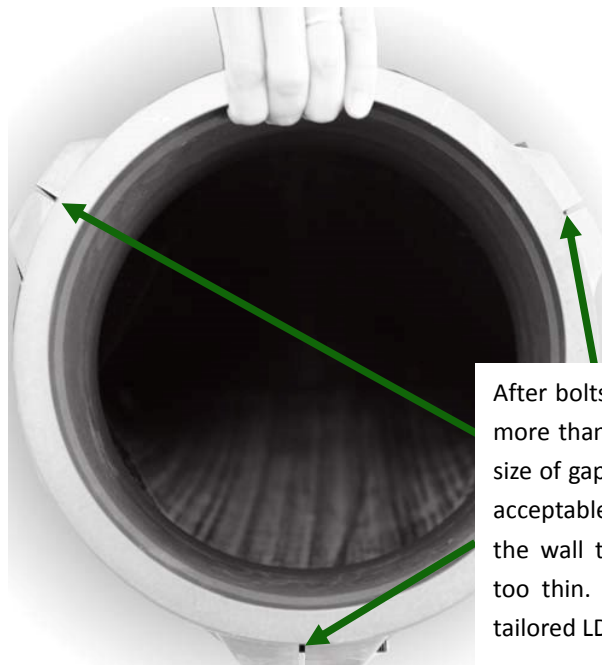


5. Use hardware tools to fasten bolts evenly.



- Please do not fasten one bolt to the end and then fasten another bolt. Please fasten the all bolts evenly. You may fasten all bolts by several turns.

6. Use more than 50 lbs\*ft torque to fasten the bolts finally. Usually the higher final torque used the better.



After bolts are fastened completely at more than 50 lbs\*ft torque, the same size of gaps between LDHC clamps are acceptable. If no gaps exist, it means the wall thickness of your hoses are too thin. Please contact us to order tailored LDHC couplings.

**\*\*The same size of gaps between LDHC clamps are acceptable. If the size of gaps are not approximately the same, please adjust the tightness of bolts to keep approximately the same size of gaps. The final torque of at least 50 lbs\*ft is suggested!**

7. Assembling the another end of LDHC coupling on the another end of hoses.